

FOR LEASE



1144 Executive Circle in Cary

Two suites available:

- 2,750± SF medical office space
 - Suite previously used by an orthodontist
 - Space occupies entire second floor of this professional building
 - Move-in ready! Equipped with four exam chairs, X-ray, lab, staff lounge, business office, reception area and waiting room
- 2,125± SF medical office space
 - Dental office previously upfit for oral surgery
 - New paint and carpet
 - 4 procedure rooms, X-ray area, and private patient entry

Contact broker for lease rates



Contact *Karen Senchak*
for more information
919.821.7890

Ksenchak@lundygroup.com

**THE
LUNDY**

GROUP, INC. P.O. Box 33279

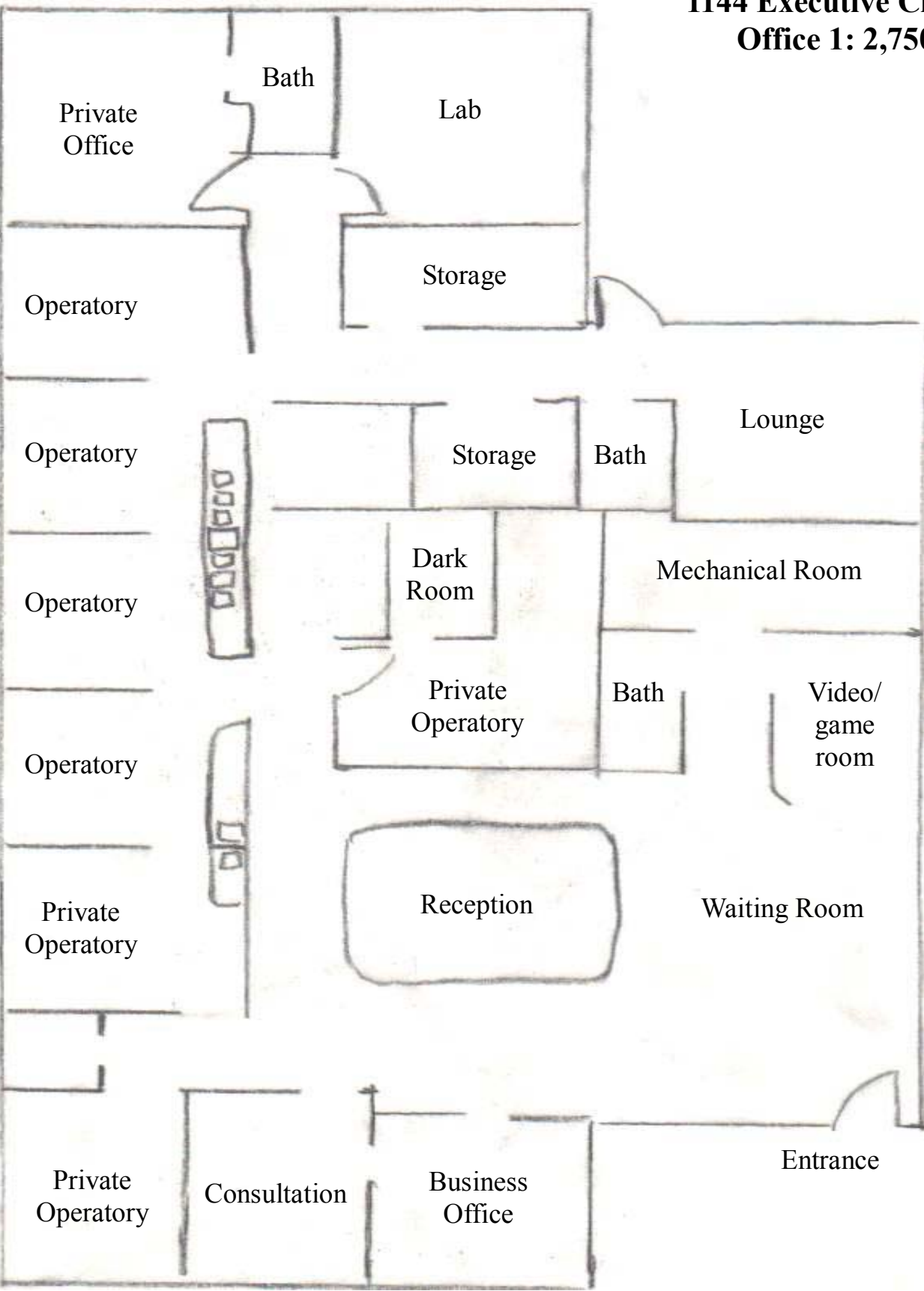
Raleigh, NC 27636

919.821.7890

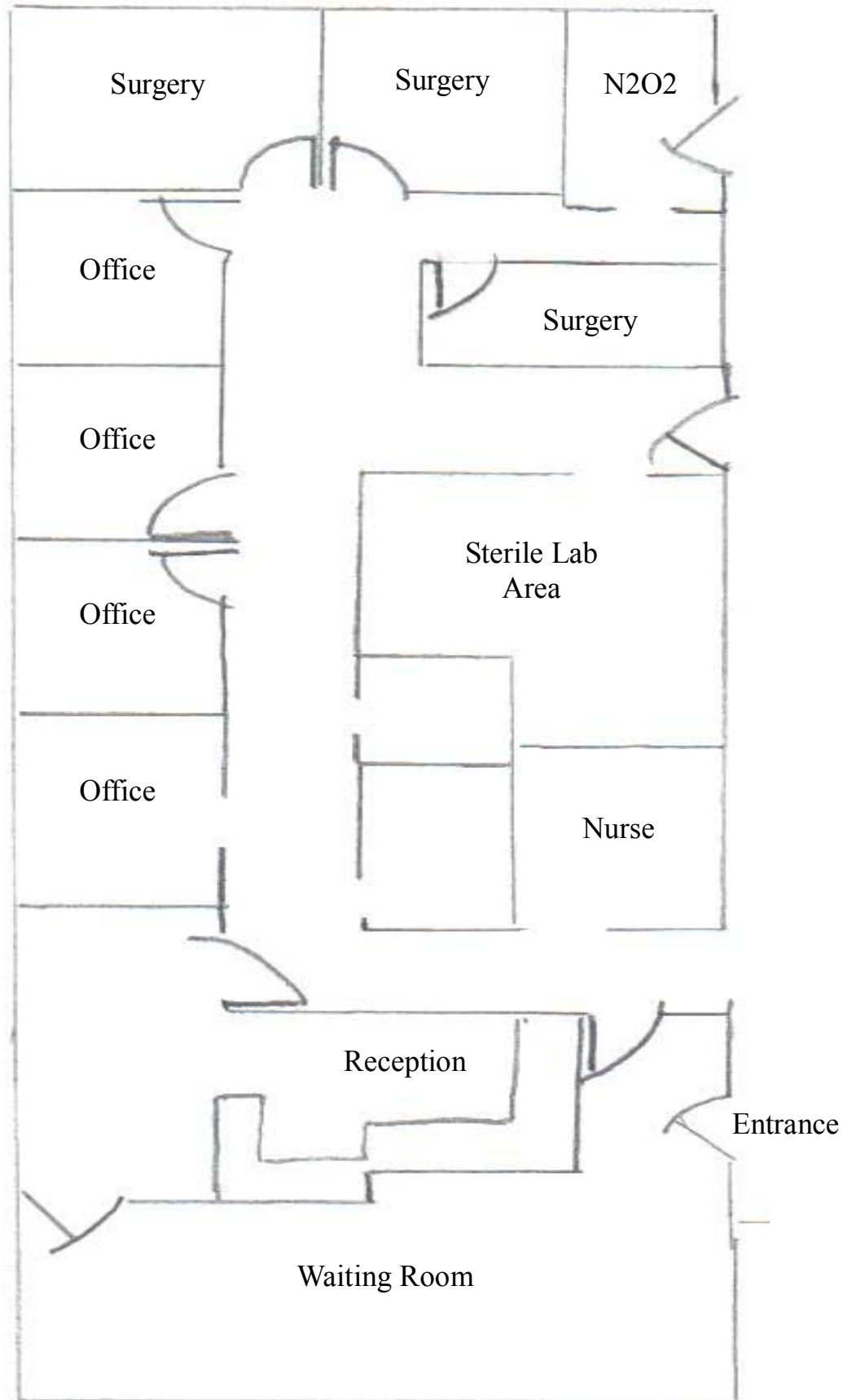
www.lundygroup.com

The information in this flyer is accurate to the best of Lundy's knowledge and is subject to change without notice.

1144 Executive Circle
Office 1: 2,750 SF



1144 Executive Circle
Office 2: 2,125 SF



Office 1:



Office 2:

