

FESTIVAL PARK PLAZA



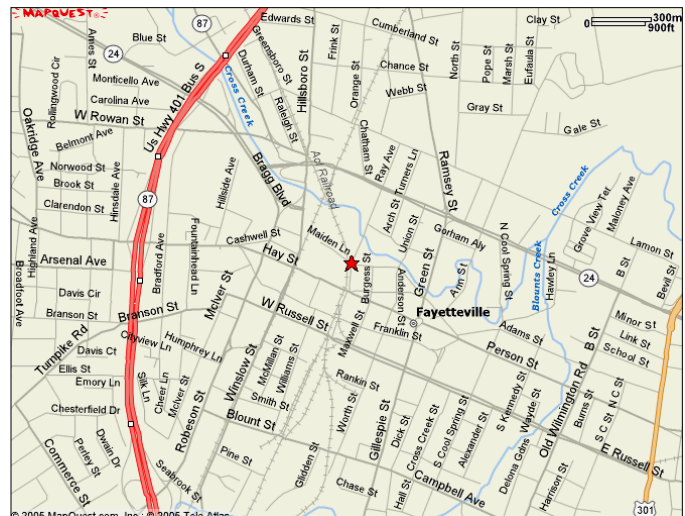
225 Ray Avenue in Fayetteville

Located at the entrance of the new
amphitheatre, which will host a variety
of shows and concerts

- Office ~ Retail ~ Restaurant
- 1st floor: Up to 11,300± SF available
- 2nd floor: Up to 3,600± SF available
- 3rd floor: 785± SF to 4,675± available
- On the promenade for Festival Park
- Excellent downtown location at the intersection of Ray Avenue and Maiden Lane

*Don't miss out on this
exciting opportunity!*

Contact *Chanel McIntyre* or *Karen Senchak*:
919.821.7890
1-866-383-3750
Cmcintyre@lundygroup.com
Ksenchak@lundygroup.com



**THE
LUNDY
GROUP, INC.**

P.O. Box 33279

Raleigh, NC 27636

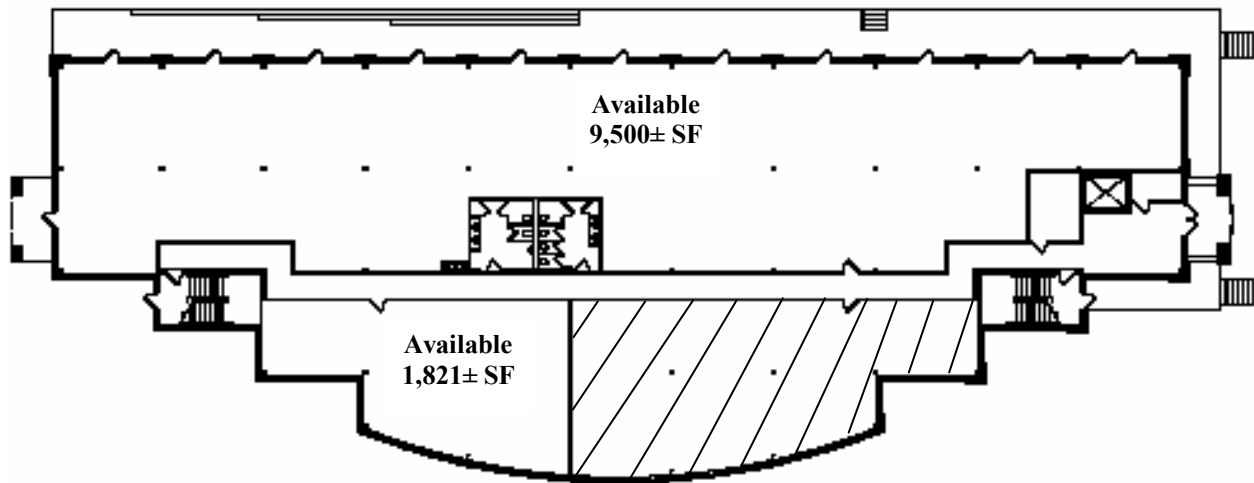
(919) 821-7890

(919) 821-2070 fx

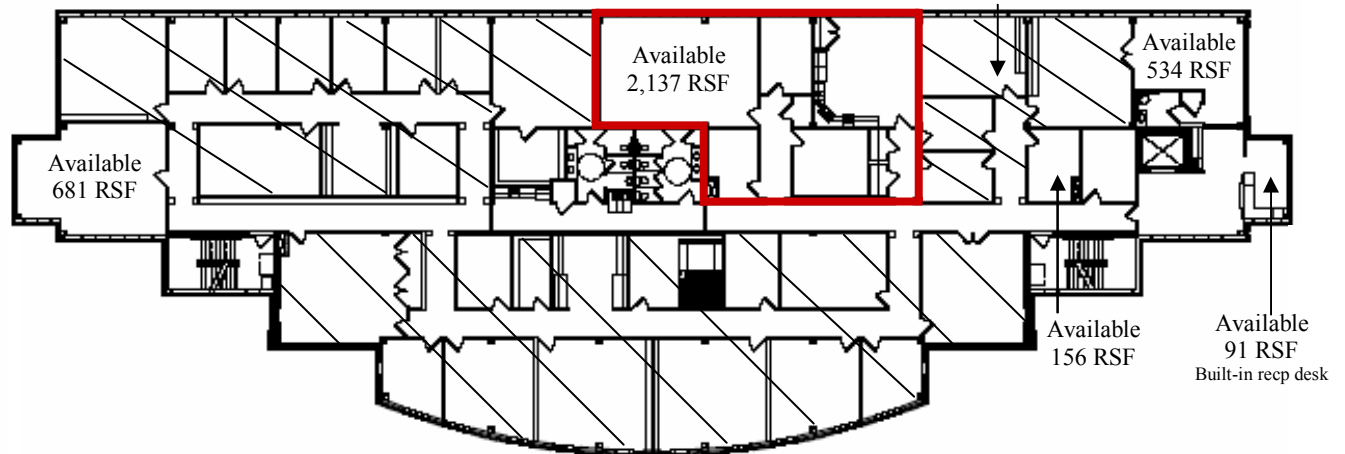
www.lundygroup.com

The information in this flyer is accurate to the best of Lundy's knowledge and is subject to change without notice.

FESTIVAL PARK PLAZA

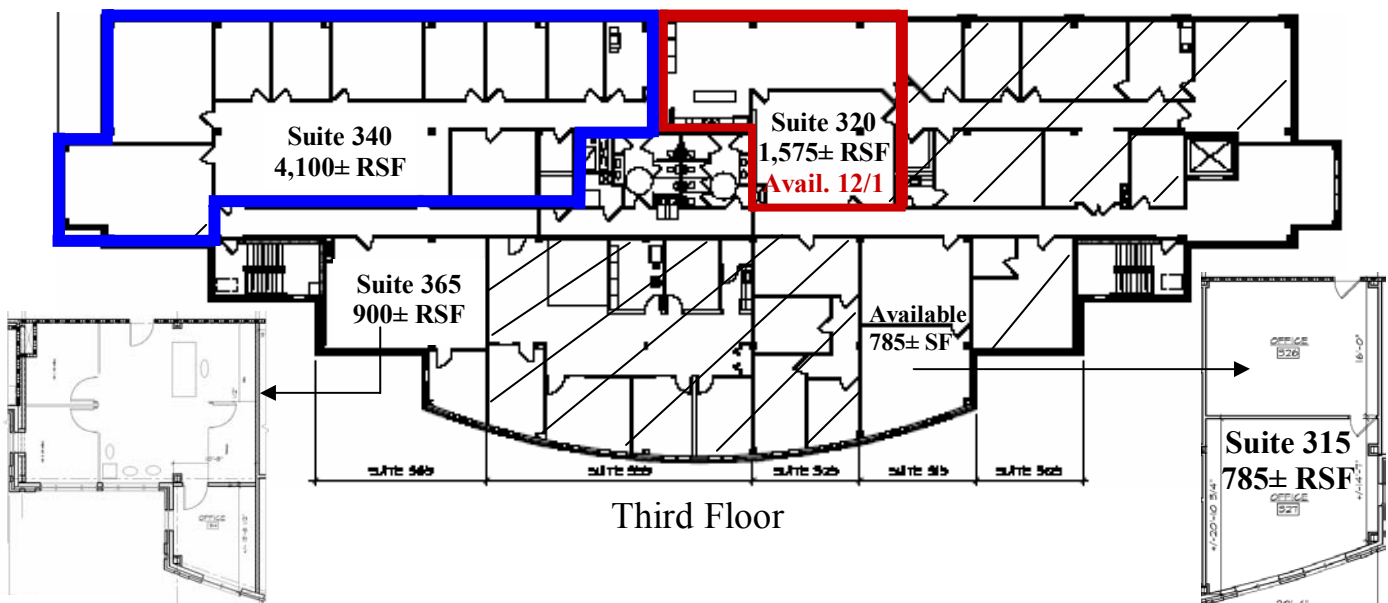


First Floor



Second Floor

Blue and red outlines denote potential layouts.



Third Floor