

# FESTIVAL PARK PLAZA



## 225 Ray Avenue in Fayetteville

Located at the entrance of the new  
amphitheatre, which will host a variety  
of shows and concerts

- Office ~ Retail ~ Restaurant
- 45,000 total SF
- 1st floor: Up to 10,000± SF available
- 3rd floor: 900± SF to 9,975± available
- On the promenade for Festival Park
- Excellent downtown location at the intersection of Ray Avenue and Maiden Lane

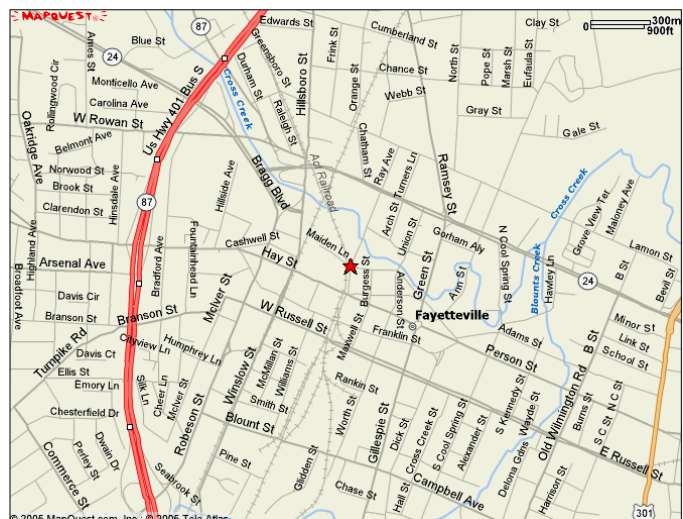
*Don't miss this exciting opportunity!  
~ Limited space available ~*

Contact *Karen Senchak*  
for more information:

919.821.7890

1-866-383-3750

[ksenchak@lundygroup.com](mailto:ksenchak@lundygroup.com)



**THE  
LUNDY  
GROUP, INC.**

P.O. Box 33279

Raleigh, NC 27636

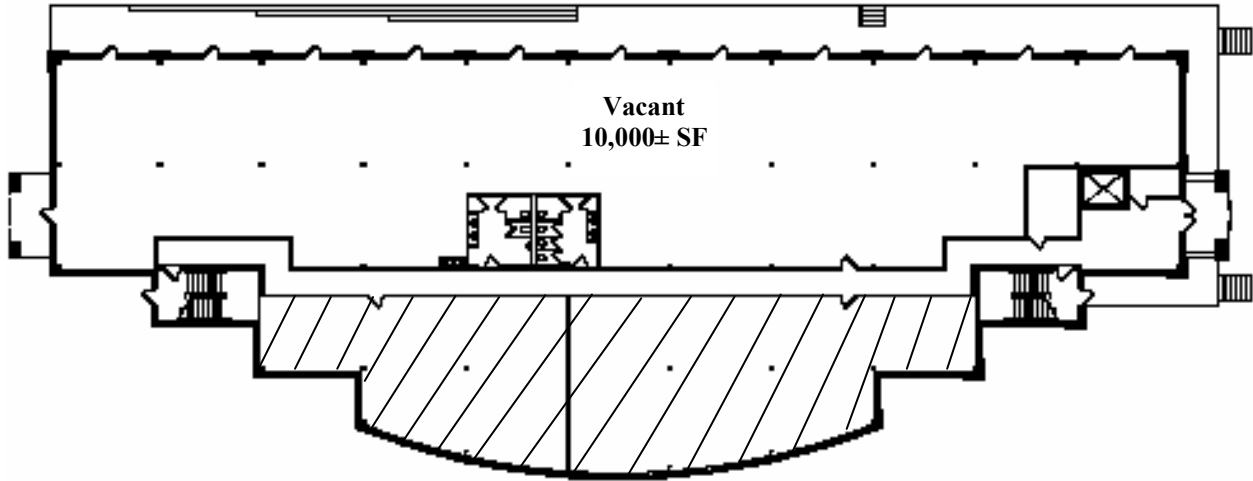
(919) 821-7890

(919) 821-2070 fx

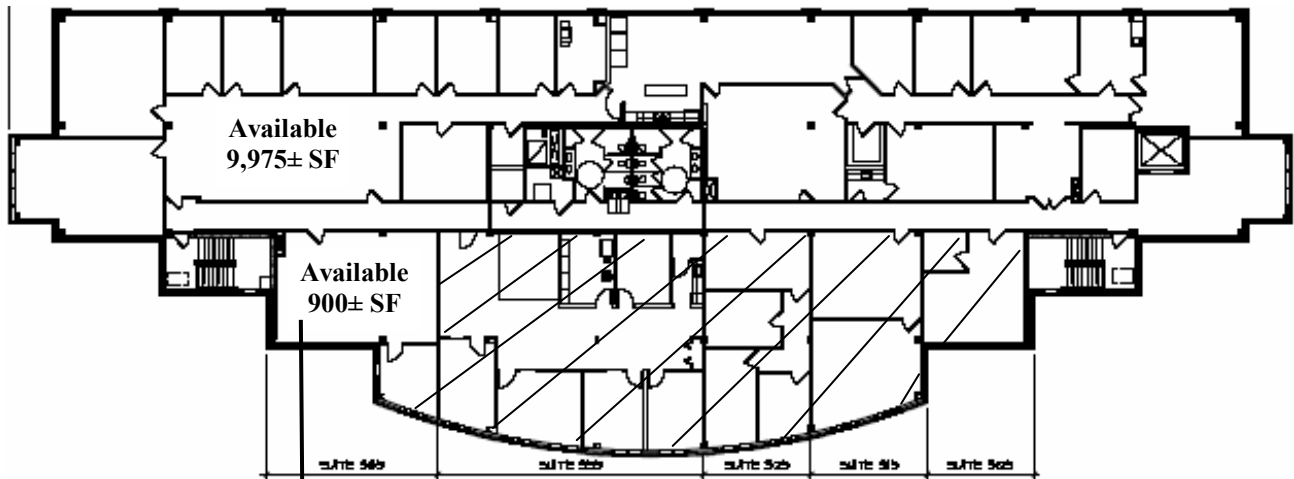
[www.lundygroup.com](http://www.lundygroup.com)

*The information in this flyer is accurate to the best of Lundy's knowledge and is subject to change without notice.*

# FESTIVAL PARK PLAZA



First Floor



Third Floor

