

# AVAILABLE



## 1143-C EXECUTIVE CIRCLE Cary, NC

1,661+/- SF

**Two-story office condo**

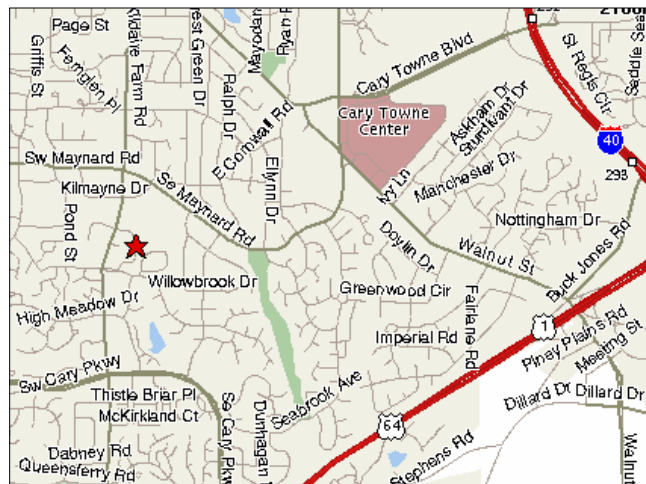
**4 offices and work area downstairs**

**Open area on second floor**

**Excellent location in Kildaire Farm Corridor**

**Second-floor tenant willing to move or sign  
long-term lease**

*Contact broker for rates and sale price.*



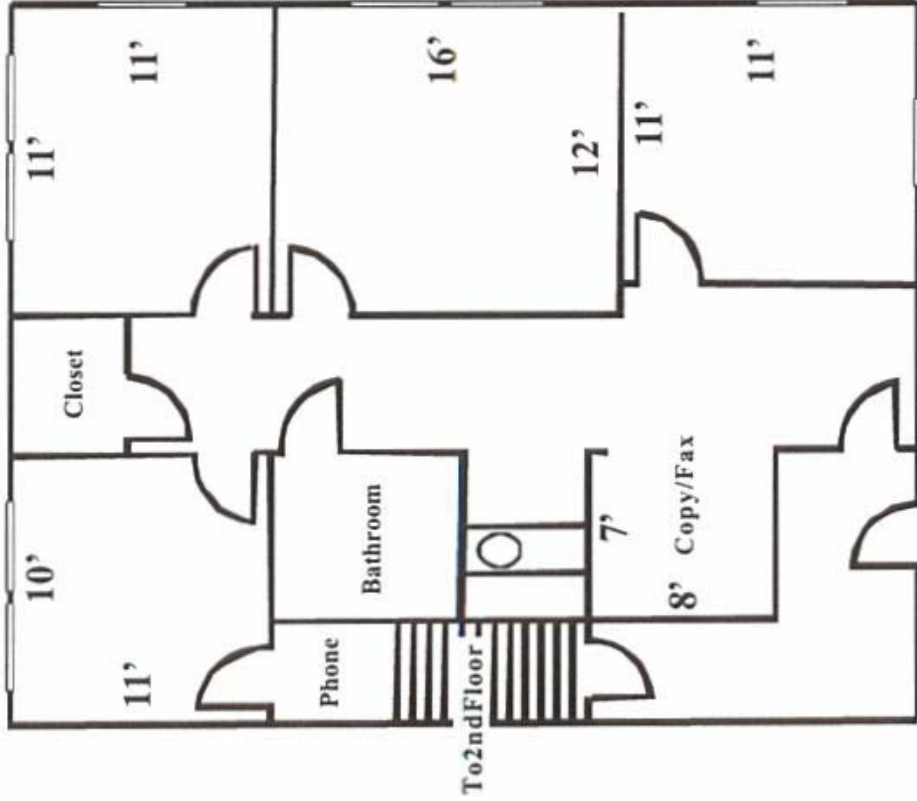
**Contact Karen McGann for more information:  
Kmcgann@lundygroup.com  
919.821.7890**

*The information in this flyer is accurate to the best of Lundy's  
knowledge and is subject to change without notice.*

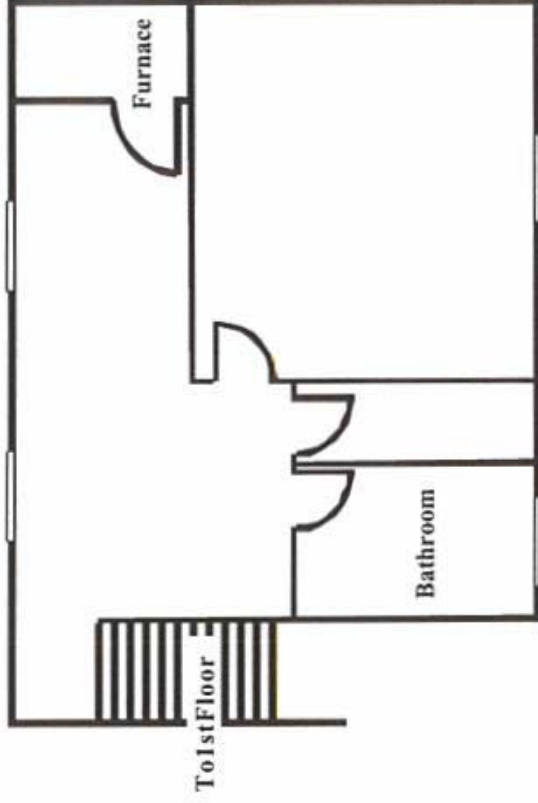


P.O. Box 98329  
Raleigh, NC 27624  
919.821.7890  
www.lundygroup.com

# 1143-C EXECUTIVE CIRCLE



FIRST FLOOR



SECOND FLOOR