

# FESTIVAL PARK PLAZA

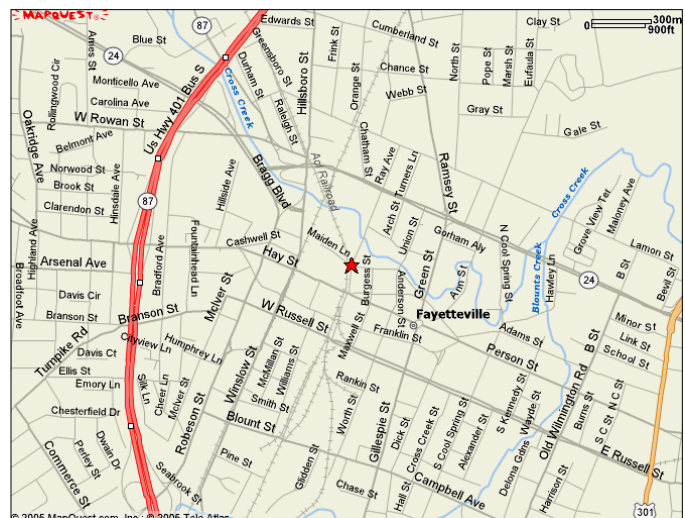


## 225 Ray Avenue in Fayetteville

Located at the entrance of the new  
amphitheatre, which will host a variety  
of shows and concerts

- Office ~ Retail ~ Restaurant
- 1st floor: Up to 9,500± SF available
- 2nd floor: Up to 8,350± SF available
- 3rd floor: 785± SF to 8,200± available
- On the promenade for Festival Park
- Excellent downtown location at the intersection of Ray Avenue and Maiden Lane

*Don't miss out on this  
exciting opportunity!*



Contact *Chanel McIntyre* or *Karen Senchak*:

919.821.7890

1-866-383-3750

[Cmcintyre@lundygroup.com](mailto:Cmcintyre@lundygroup.com)

[Ksenchak@lundygroup.com](mailto:Ksenchak@lundygroup.com)

**THE  
LUNDY  
GROUP, INC.**

P.O. Box 33279

Raleigh, NC 27636

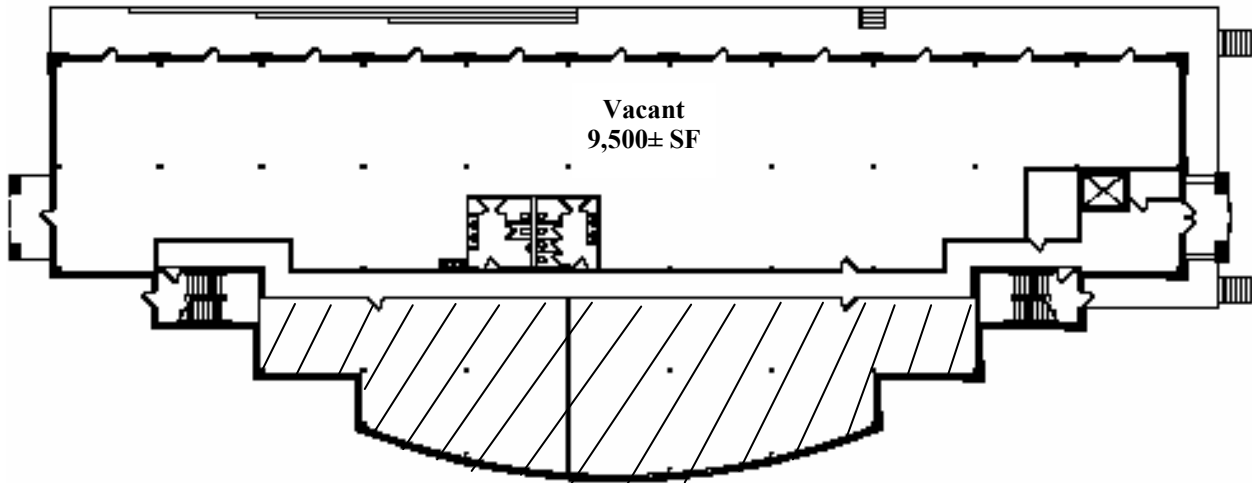
(919) 821-7890

(919) 821-2070 fx

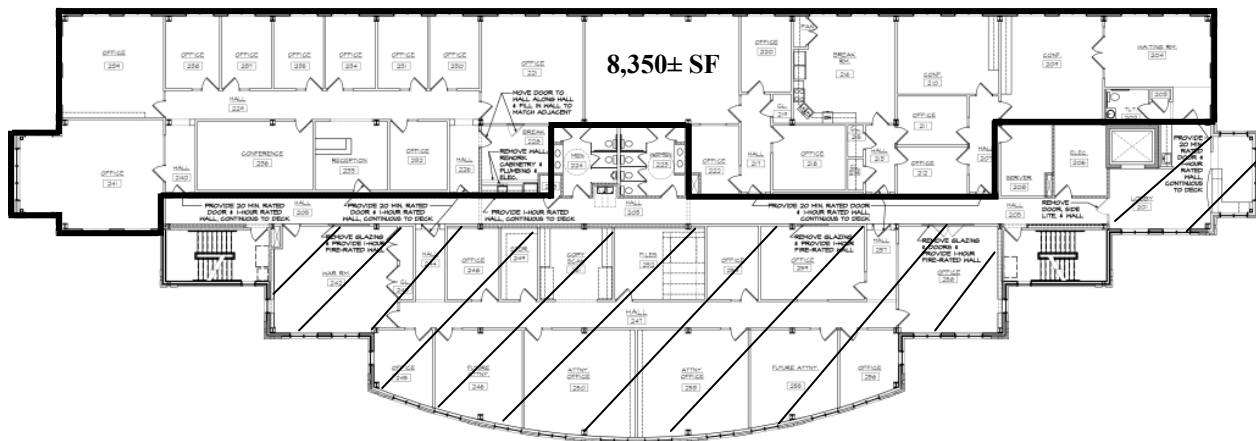
[www.lundygroup.com](http://www.lundygroup.com)

*The information in this flyer is accurate to the best of Lundy's knowledge and is subject to change without notice.*

# FESTIVAL PARK PLAZA

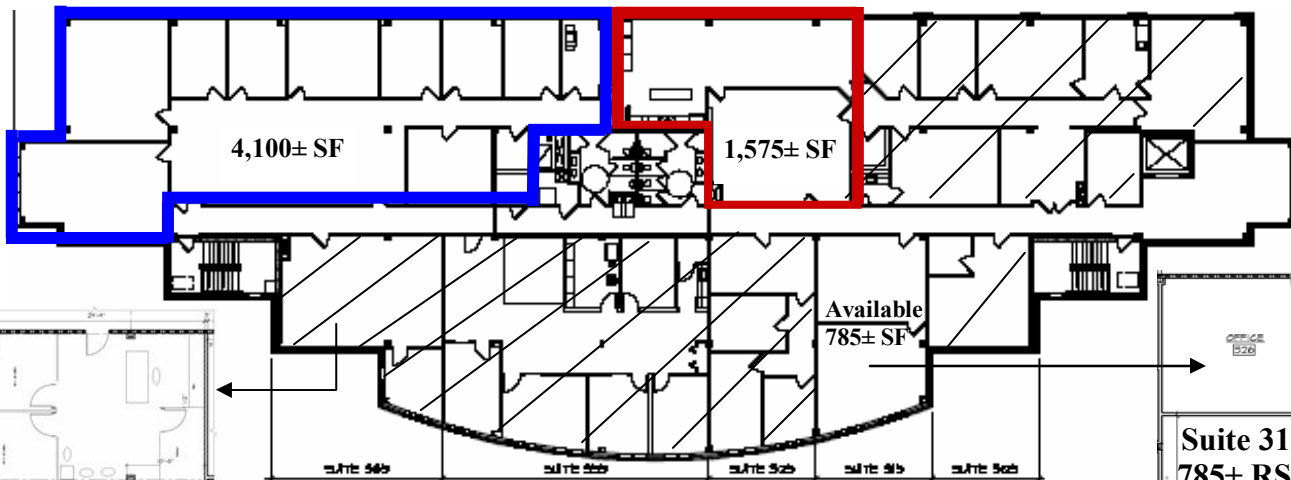


First Floor



Second Floor

Blue and red outlines denote potential layouts.



Third Floor



Suite 365  
900± RSF  
Avail. 11/1



Suite 315  
785± RSF